



**STALA**  
TUBE

Energy industry

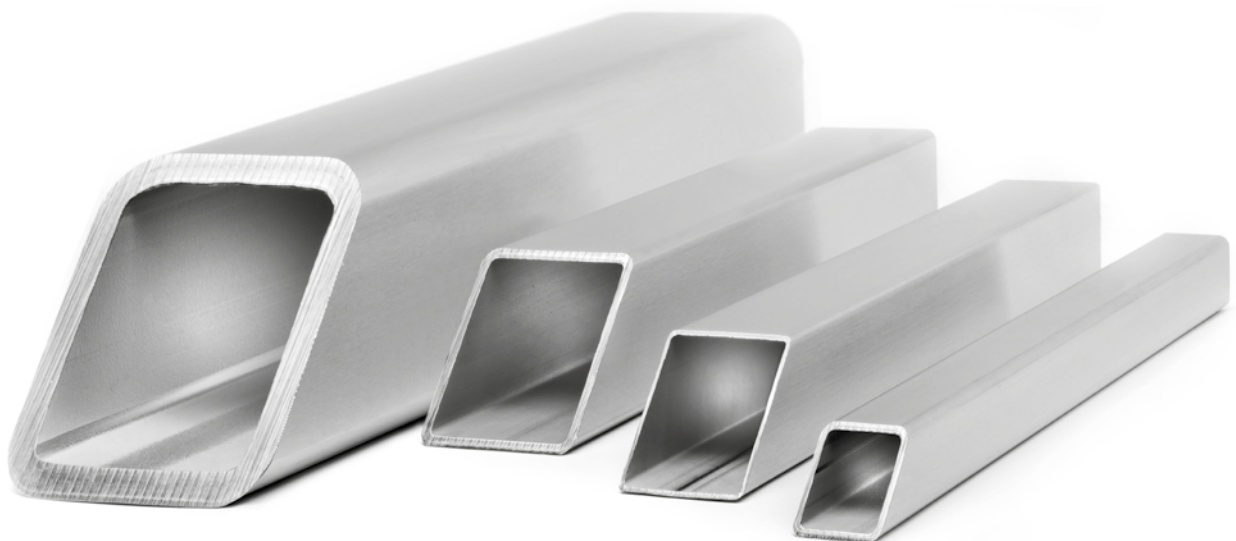
LIGHTER STRUCTURES AND LOWER LIFECYCLE COSTS BOTH ON- AND OFFSHORE



## ENERGY INDUSTRY

### Stalatable is the leading supplier of stainless structural products

Our Duplex hollow sections and profiles are widely used in energy industry from nuclear plants to oil rig topsides and gas processing plants. Applications include pipe support systems and pipe racks for process piping, skids for equipment and machinery, bridges and walkways, stairway towers and handrails.



### Benefits of duplex stainless steels

HIGH STRENGTH > LIGHTER STRUCTURES | MAINTENANCE FREE > LOW LIFECYCLE COSTS | GREAT CORROSION RESISTANCE INCL. PITTING AND INTERGRANULAR CORROSION | HIGH TENSILE AND YIELD STRENGTH | GREAT WELDABILITY AND FATIGUE PROPERTIES

# Lean Duplex Hollow Sections

## EN 1.4362 / UNS S32304 Hollow Sections (PRE min. 28)

### STANDARD PRODUCT RANGE - SPECIAL DIMENSIONS BY REQUEST

50x50x4  
60x60x4  
80x80x5  
100x100x6  
120x120x6  
150x100x6  
150x150x6  
200x200x8  
250x250x8

### DELIVERY CONDITION

Cold formed, welded and pickled

### MARKING AND PACKING:

Hollow sections are marked with plastic stickers  
Bundles are marked with bundle tags  
Bundles are tied with plastic straps

### TECHNICAL SPECIFICATIONS:

Raw material according to MDS - D35  
Hollow sections according to MDS - YD37

### MECHANICAL PROPERTIES, ROLL FORMED HOLLOW SECTIONS

Grade	Rp0.2 [MPa]	Rm [MPa]	Elongation A5 min. [%]
EN 1.4362 / UNS S32304	500	690	25

### MECHANICAL PROPERTIES, PRESS BRAKED HOLLOW SECTIONS AND WELDED I-BEAMS

Grade	Rp0.2 [MPa]	Rm [MPa]	Elongation A5 min. [%]
EN 1.4362 / UNS S32304	420	630	25



The world's largest product range  
in stainless steel hollow sections



up to 300x300x12 mm



up to 400x200x12 mm



Stalargo up to 500x500x15 mm



up to 500x500x12x20 mm

Other duplex, lean duplex and austenitic grades also available - ask for more information.

# Infinite possibilities with Stalafit

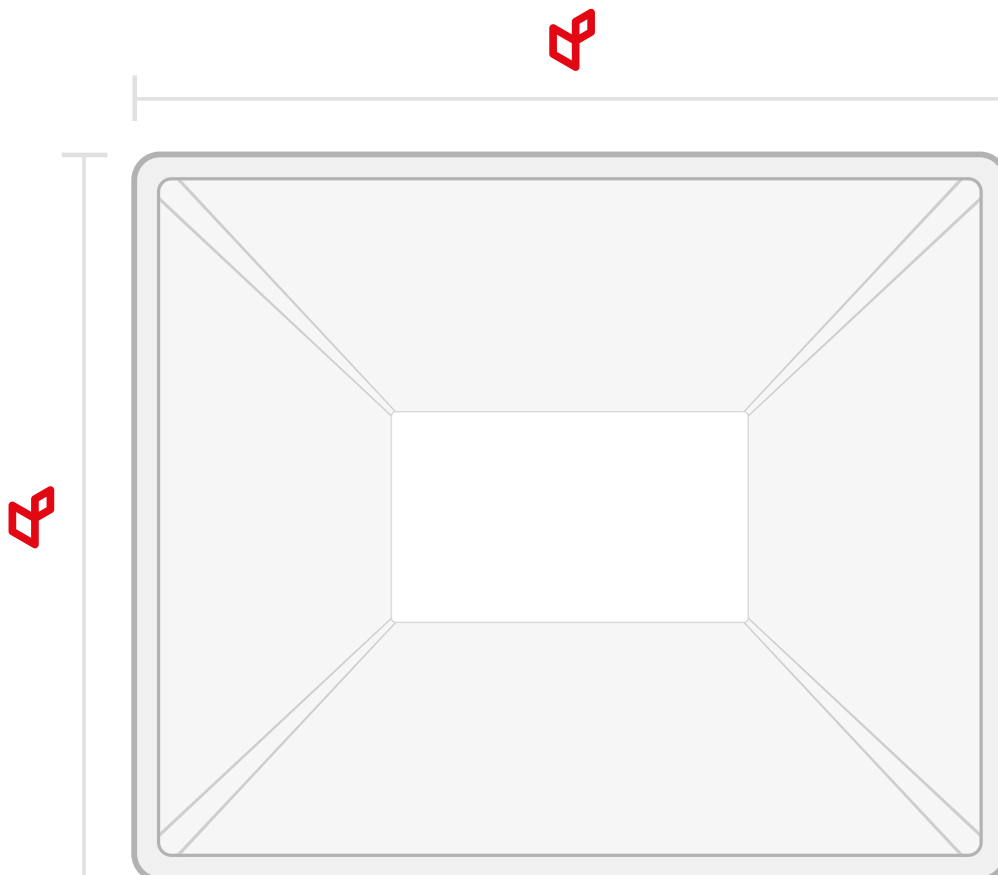


With our Stalafit service you can fully optimize your structural hollow sections and gain savings in the structure's weight and costs. The outer dimensions of hollow sections can be tailored exactly according to your specific application.



Stalafit PRO is an advanced tool for professional design. It can be used to design beam and column structures that consist of Stalalube's RHS- and I-beams. Stalafit PRO is a fully functional design application that produces ultimate limit state, serviceability limit state and fire design in accordance with Eurocodes.

Download Stalafit PRO in your app store for free or use it here: [stalafit.stalalube.com](https://stalafit.stalalube.com)

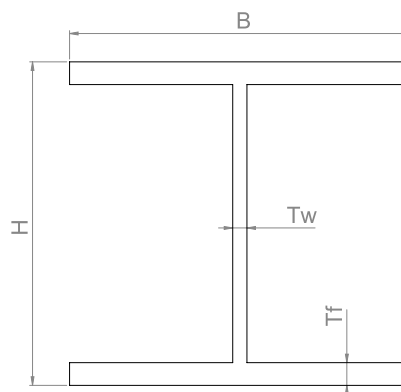


# Stainless welded I-beams

## EN 1.4404, 1.4362, 1.4462

Welded I-beams with outside dimensions according IPE - HEA - HEB designation. Flange and web thickness according to coil or plate standard.

FLANGE AND WEB DIMENSIONS ACCORDING TO DIN 1025-5					
IPE	H	B	TW	TF	kg/m
200	200	100	6	8	21.36
220	220	110	6	10	26.86
240	240	120	6	10	29.39
270	270	135	8	10	37.13
300	300	150	8	10	41.40
330	330	160	8	12	49.68
360	360	170	8	12	53.47
400	400	180	8	15	66.04
450	450	190	10	15	78.21
500	500	200	10	15	84.53



FLANGE AND WEB DIMENSIONS ACCORDING TO DIN 1025-2					
HEB	H	B	TW	TF	kg/m
100	100	100	6	10	19.59
120	120	120	8	10	25.28
140	140	140	8	12	33.88
160	160	160	8	12	38.93
180	180	180	8	15	52.14
200	200	200	10	15	60.83
220	220	220	10	15	67.15
240	240	240	10	16	77.10
260	260	260	10	20	99.54
280	280	280	10	20	107.44
300	300	300	10	20	115.34

FLANGE AND WEB DIMENSIONS ACCORDING TO DIN 1025-3					
HEA	H	B	TW	TF	kg/m
120	114	120	5	8	19.04
140	133	140	6	8	23.24
160	152	160	6	10	31.54
180	171	180	6	10	35.60
200	190	200	8	10	42.34
220	210	220	8	10	46.77
240	230	240	8	12	58.52
260	250	260	8	12	63.58
280	270	280	8	12	68.64
300	290	300	8	15	87.53
320	310	300	10	15	93.22
340	330	300	10	16	99.38
360	350	300	10	20	119.29
400	390	300	10	20	122.45

Special dimensions also available,  
ask for more information

Full cross section properties table available on our website  
[stalatube.com/toolkit](http://stalatube.com/toolkit)

#### MARKING ON PRODUCTS

Laser marked or engraved	Stalatube Oy, made in EU, steel grade, dimensions, plate number
Bundle tag	Dimensions, steel grade, surface condition, bundle size, plate number, bundle number

#### BUNDLE PACKING

Plastic bands

#### DELIVERY CONDITIONS

Manufacturing	Welded
Surface condition	Pickled

#### AVAILABILITY

The availability of dimension and steel grade should be checked before ordering.

#### Dimension range

Height H: 100 - 500 mm  
Flange width B: 100 - 300 mm  
Web thickness Tw: 5 - 12 mm  
Flange thickness Tf: 6 - 20 mm <sup>1)</sup>  
Standard length 6 m

<sup>1)</sup>Duplex max 15 mm

Also available as



See more information  
on page 3

# Best stainless steel solutions to answer your needs.

Over the past 45 years, we've gained the expertise, created the world's widest range of hollow sections and developed a global distribution network to be able to serve you in all corners of the globe, even in the most demanding projects and applications.

[www.stalatube.com](http://www.stalatube.com)

**STALa**  
TUBE

**Head office and production:  
STALATUBE OY**

Taivalkatu 7  
15170 Lahti FINLAND  
Tel. +358 3 882 190  
Fax + 358 3 882 1914  
[sales@stalatube.com](mailto:sales@stalatube.com)

**Stalatube Sp. z o.o.**

Sosnowiec-Pieńki  
ul. Przemysłowa 10  
95-010 Stryków  
Poland  
[plsales@stalatube.com](mailto:plsales@stalatube.com)

**STALATUBE BV**

Touwslagerij 13  
NL-4762 AT Zevenbergen  
NETHERLANDS  
Tel +31 168 325 777  
Fax +31 168 325 778  
[bvsales@stalatube.com](mailto:bvsales@stalatube.com)

**STALATUBE INC.**

P.O. Box 210 Bryn Mawr  
PA 19010-0210 UNITED STATES  
Tel +1 610 525 7706  
Fax +1 610 525 5717